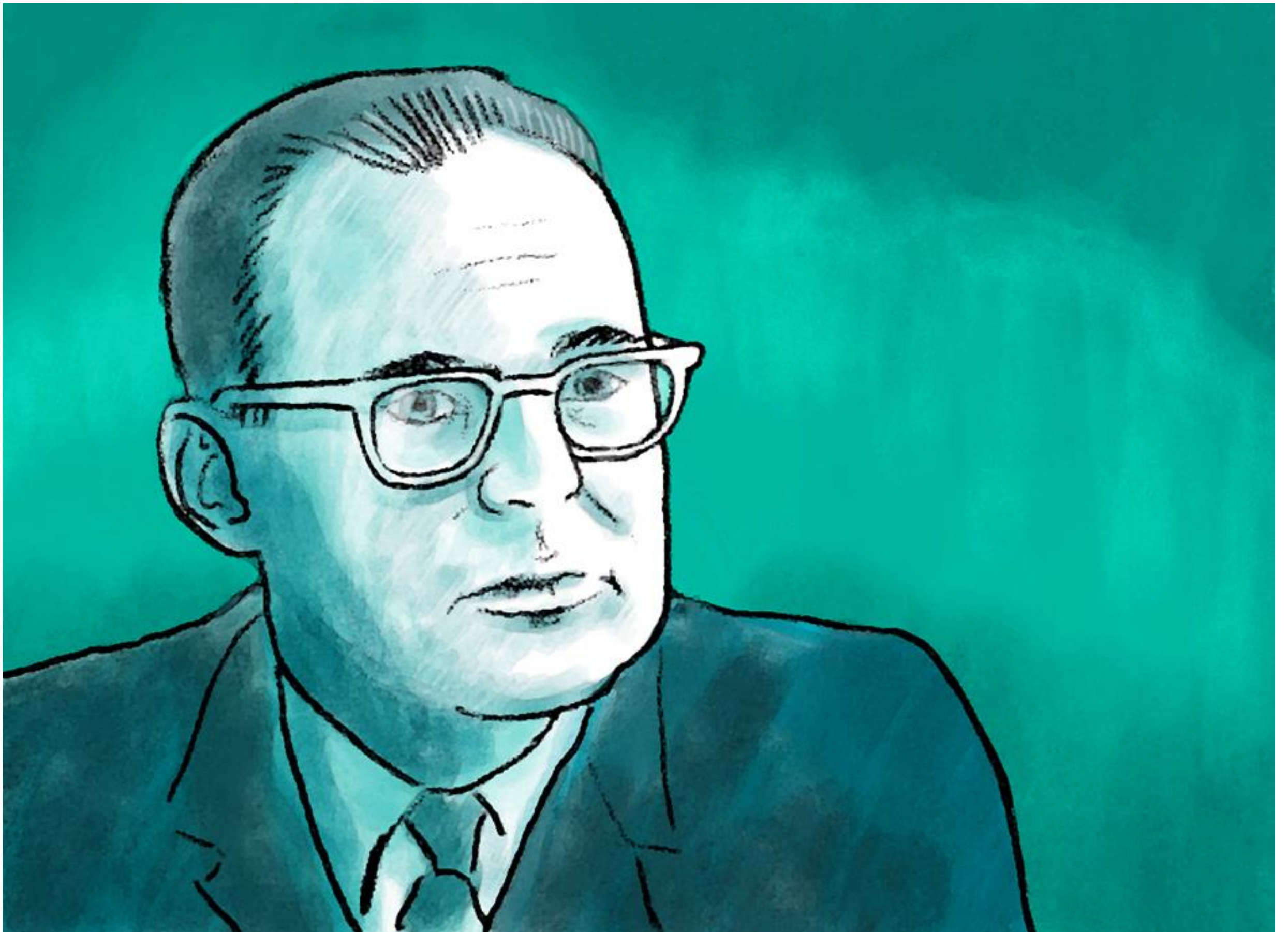


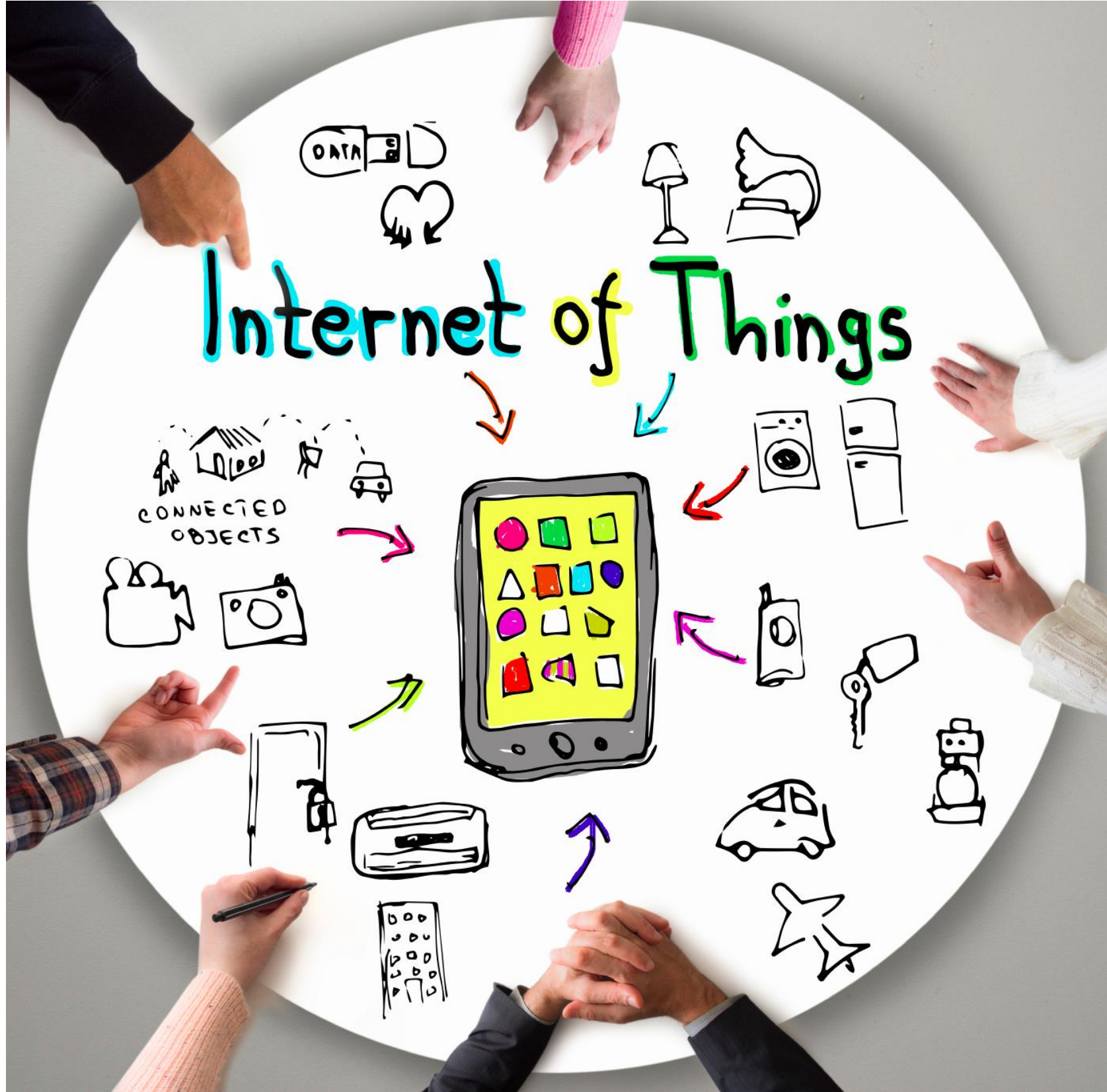
Opportunities through data



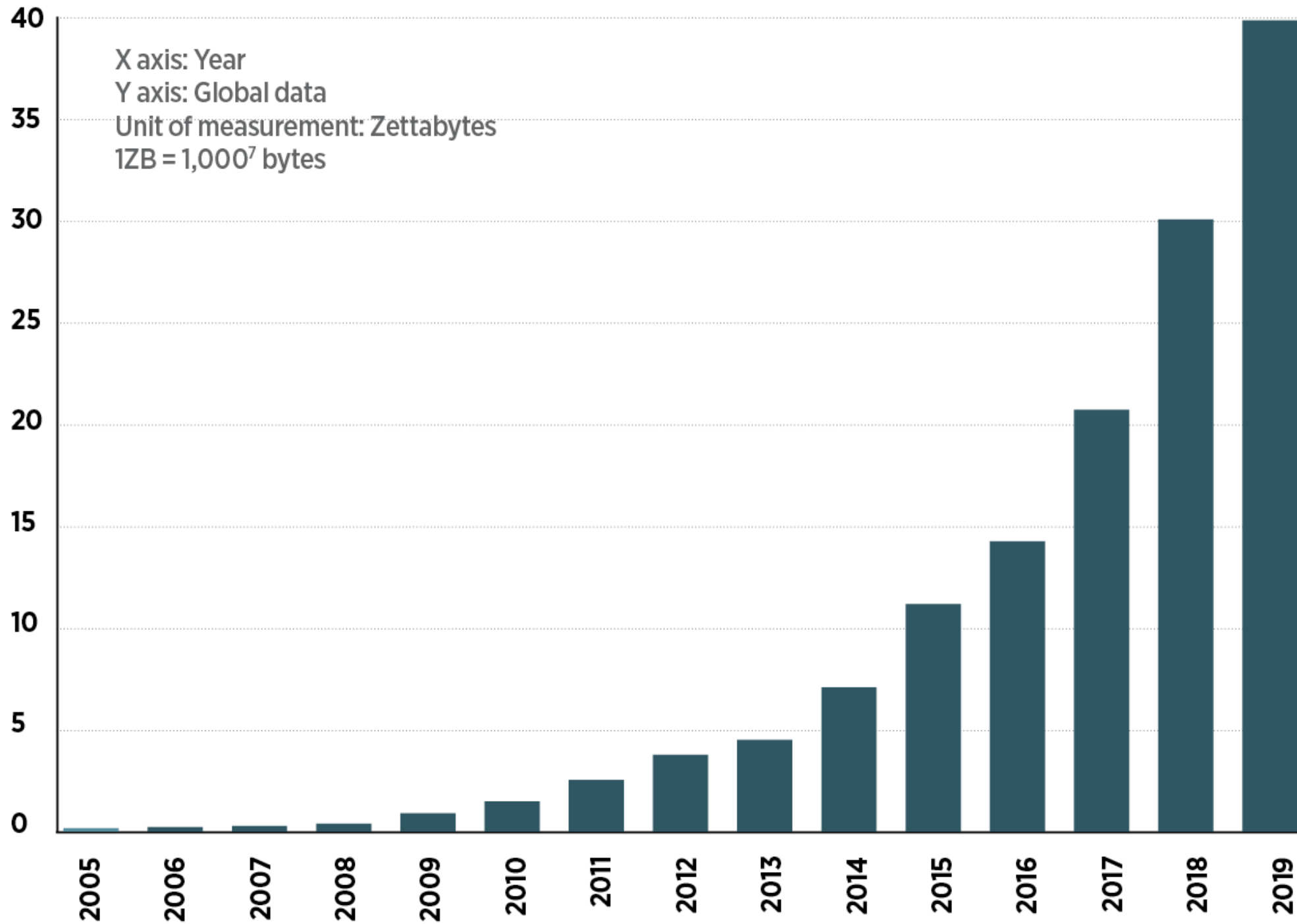


**Two of the biggest buzz words and
possibly misused words in tech in 2015**





DATA GROWTH



Note: Post-2013 figures are predicted. Source: UNECE

Sources

Type

Activity

Operational system data

Structured Data

Efficiency savings

Web, App and Social Media

Unstructured Data

Targeted real time marketing

Sensors, smart meters, IoT

Geo-Spatial Data

Sentiment analysis

Mobile Network data

Opportunity analysis

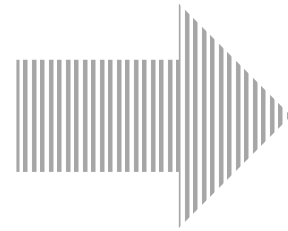
Open data

Real time risk analysis

Conversational data

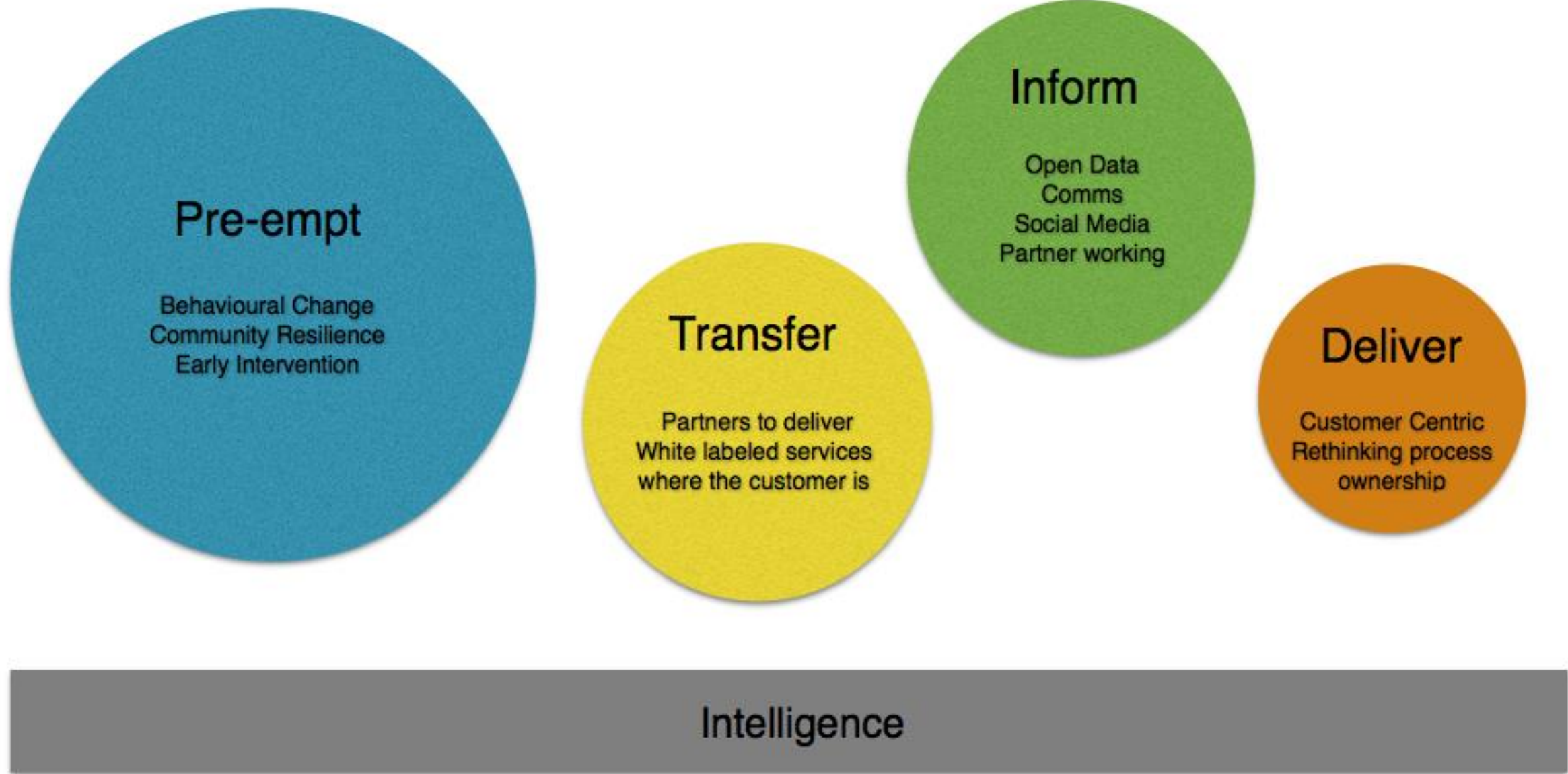
Real time fraud detection

Infrastructure	Analytics	Applications
<p>NoSQL Databases</p>	<p>Hadoop On Prem</p> <p>Cloud</p>	<p>For Business Analysts</p> <p>Data Science Platforms / Tools</p>
<p>NewSQL Databases</p>	<p>Cluster Services</p>	<p>BI Platforms</p> <p>Unstructured Data</p> <p>Data Visualization</p>
<p>MPP Databases</p>	<p>Management / Monitoring</p>	<p>Machine Learning</p> <p>AI</p> <p>Social Analytics</p>
<p>Graph Databases</p>	<p>Data Transformation</p> <p>Security</p>	<p>Analytics Services</p> <p>Statistical Computing</p> <p>Log Analytics</p>
<p>Crowd-sourcing</p>	<p>Storage</p> <p>App Dev.</p>	<p>Location/People/Events</p> <p>Big Data Search</p> <p>Statistical Computing</p> <p>Log Analytics</p>
<p>Cross Infrastructure / Analytics</p>		
<p>Open Source</p>		
<p>Data Sources</p>		



itlab





900

Excel File Edit View Insert Format Tools Data Window Help

service lines

Home Insert Page Layout Formulas Data Review View

Calibri 12 A A Wrap Text Merge & Center General

B5 fx Legislation empowers the council to allocate statutory addresses. The council may, in relation to any street or road to which the public have access: (a) give such

	A	B	C	D	E	F
23		condition in which an applicant lives.				
24	Introductory council tenancies	A new tenancy in local authority property does not generally become secure for a defined period after it starts. If at any time before the end of this period the tenant misbehaves the local authority can initiate proceedings to evict the tenant. In Scotla	is required by	Duty	Resident	Accommodation Services
25	Registering for a council property	The local authority processes applications to go on the housing register and allocates points to prospective tenants according to their current circumstances. The criteria under which an authority are likely to accept/reject applications to go on the regi	is required by	Duty	Resident	Accommodation Services
26	Rent determination	The local authority is obliged to send details of a tenancy to the Rent Office for private tenants in receipt of housing benefit whose tenancy commenced after 1 January 1989, the local authority is obliged to send details of your tenancy to the Rent Office	is required by	Duty	Resident	Accommodation Services
28	Energy efficiency	The council will provide advice on energy efficiency and carry out an assessment of a property. In the UK the SAP is the Government's recommended system for energy rating of dwellings. The Standard Assessment Procedure is used for calculating the SAP rat	is required by	Duty	Resident	Building Services
29	House surveying - major repairs	The local authority is under a duty to gain access to properties to undertake surveys for number of reasons such as major repairs and to carry out specialist surveys.	is required by	Duty	Resident	Building Services
31	Common Assessment Framework	The Common Assessment Framework (CAF) for Children and Young People is a key part of the strategy to shift the focus from dealing with the consequences of difficulties in children's lives to preventing things from going wrong in the first place. It is a n	is required by	Duty	Resident	Children Support Services
32	Support for children in care	A local authority monitors the educational progress of all children in its care and offers advice and support to both children and carers. Where required any special needs will be considered when making educational arrangements for looked after children.	is required by	Duty	Resident	Children Support Services
33	Council tax band reductions	The local authority may give a band reduction in order to recalculate the amount of council tax payable if a permanently disabled person lives in a dwelling with certain features which are essential or of major importance to the well being of the disabled	is required by	Duty	Resident	Council tax
34	Council tax benefit renewal	Local authorities may review the circumstances of anyone who is currently receiving housing and council tax benefit by issuing a change in circumstances form or by carrying out a visit.	is required by	Duty	Resident	Council tax

Sheet1

Ready Filter Mode

Jean

Care Services

Doctor

Supported Living flat

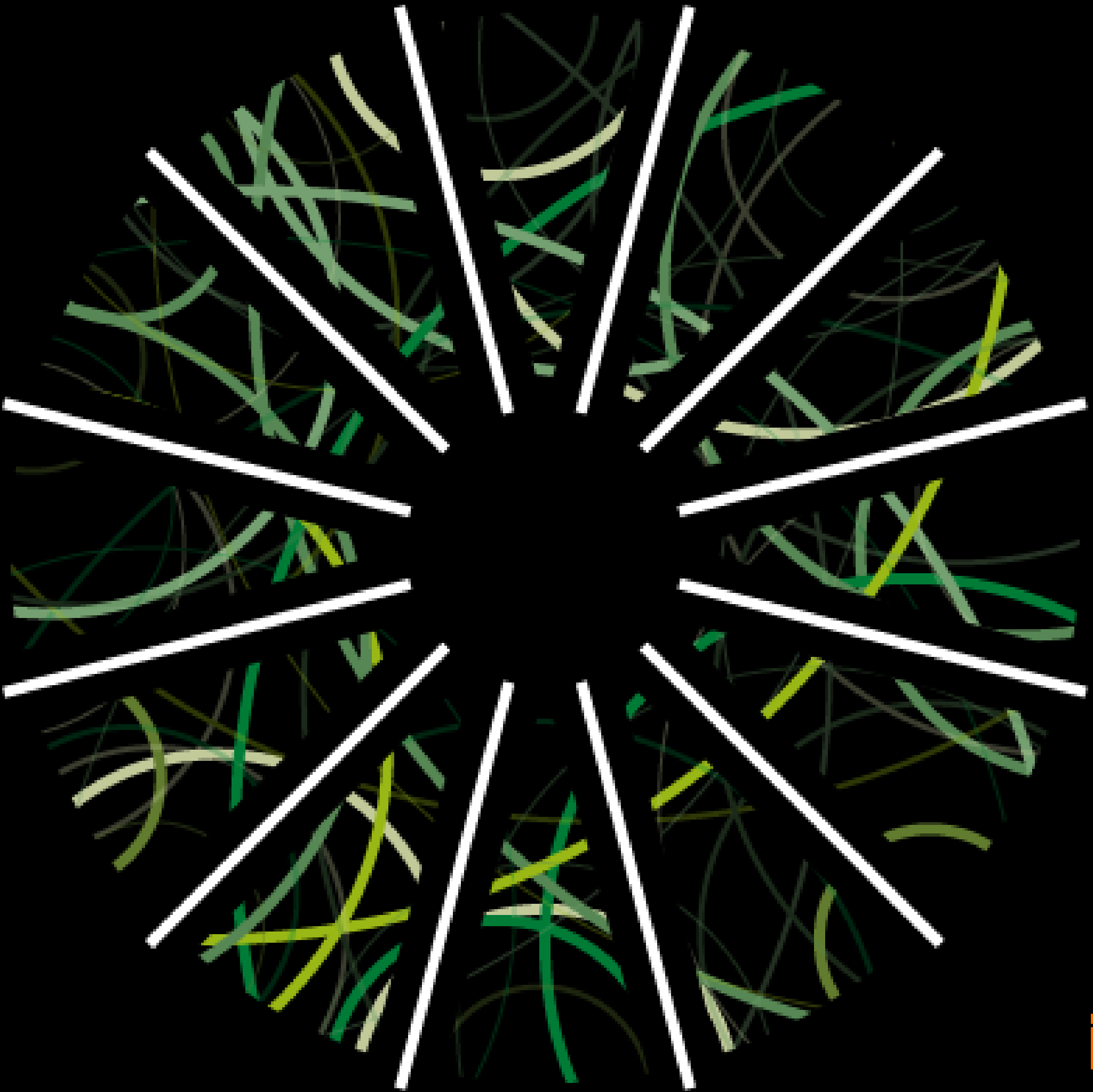
Library

Rural bus routes

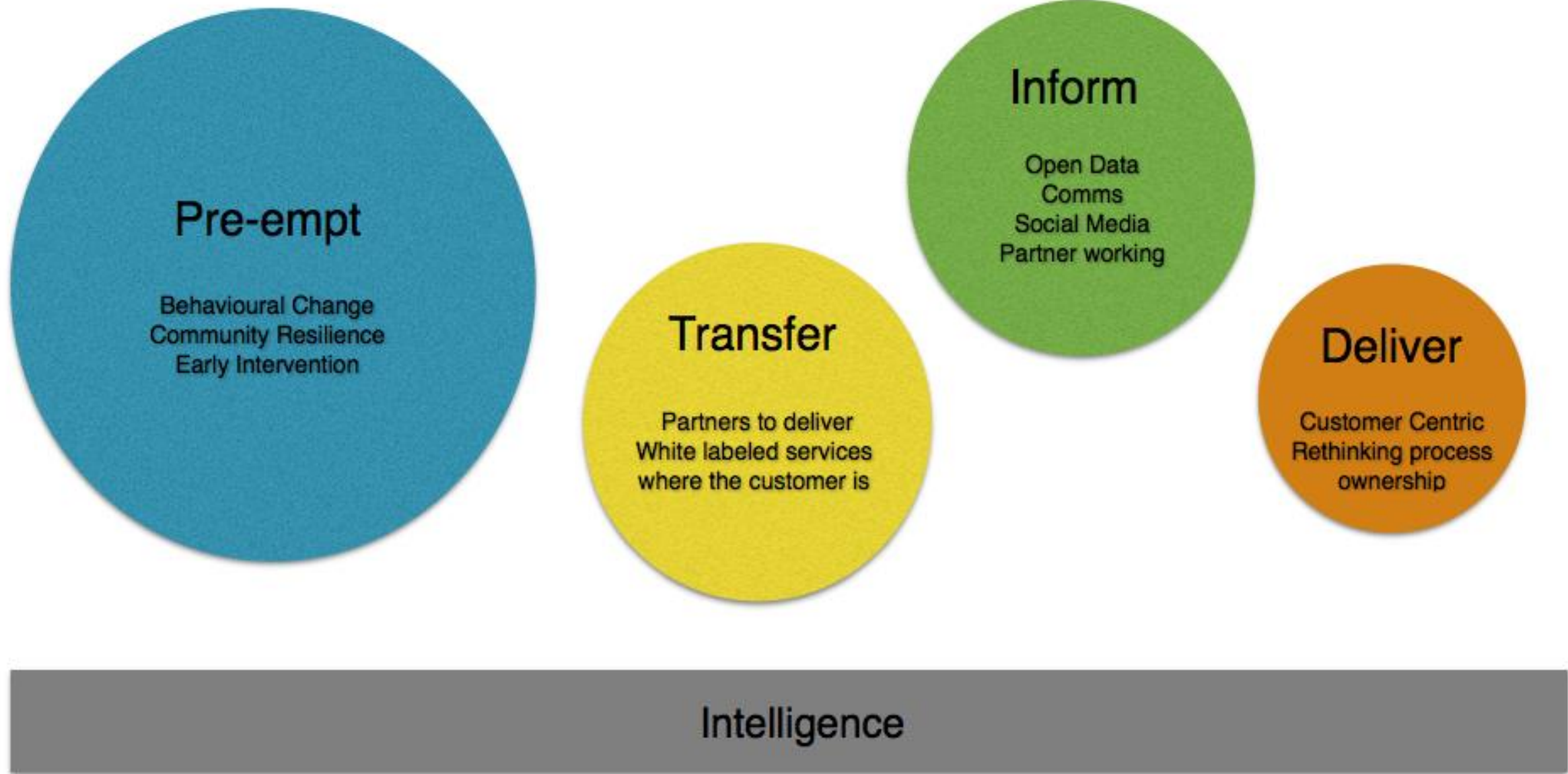
Registra







Everything our resident does
creates data;
and from that data comes the
possibility of pre-emptive action to
drive efficiencies for us and for
public services





THE *FORWARD VIEW* INTO ACTION:

**Registering interest to join the
healthy new towns programme**

T.E.C.S.

Understanding patterns and behaviours amongst residents that are frightened about their declining health and those that might be having an escalation of care needs.



Key Recommendation

Put data first...

Worry about everything else after that.

Data mapping & structuring

Data Architecture

Data applications advice

Data Management as a Service

IoT implementation

Big Data solutions (Machine Learning, A.I.)

Lucie Glenday : LGlenday@ITlab.com